

CONSTRUKT
Innovations, Inc.

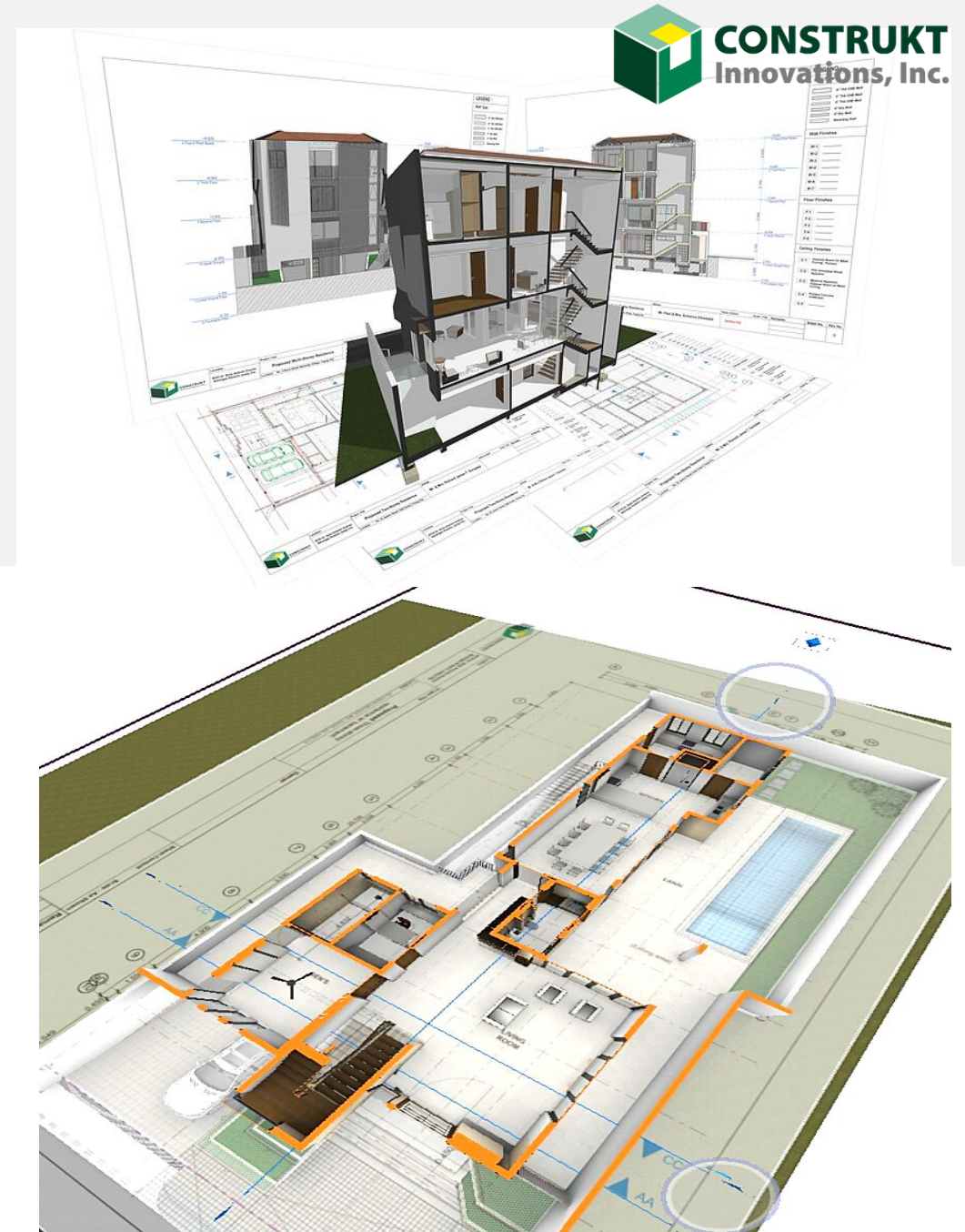
3D BIM MODELING

SERVICES INTRODUCTION



BIM Modeling

- BIMs are a 3D model-based digital representation of physical and functional characteristics of a facility.
- These accurately simulate the precise details of the project's architectural, structural, electrical, and plumbing features.
- Unlike a basic render, can clients immediately see how their projects will look and **walk through** their homes on their own devices via the app.

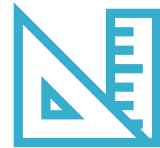


Process and Inclusion



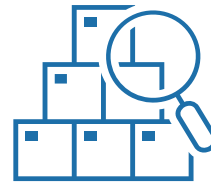
Model Creation

Creation of models from various 2D-CAD client-provided format (DWG as preferred or PDF format)



Model Integration

Combine multiple design files from different platform for project simulation Structural, Architectural, Plumbing, Mechanical, Electrical



Clash Detection

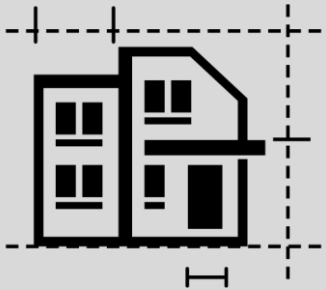
Clash Detection is the technique of **identifying if -- and where or how two parts of the building (e.g., plumbing, walls, among others) are interfering with one another**. This prevents hefty error costs before actual build.



Model Visualization

Creation of BIMx uploadable file where client can manipulate views and do walk throughs

Services Offered



ARCHITECTURAL and STRUCTURAL

1. Creation of 3D Architectural Model
2. Creation of 3D Structural Model
3. Floor and Ceiling Plans
4. Elevations & Sections 4 longitudinal and every floor
5. Collision / Clash Detections
6. Blow Up Views
7. BIM file conversion



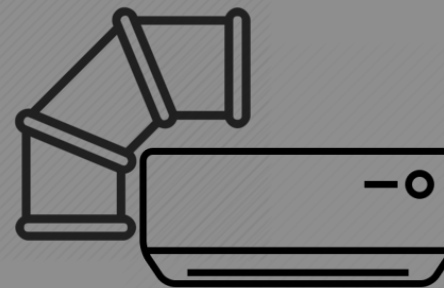
ELECTRICAL

1. Creation of 3D Electrical Model
2. Electrical layout, conduit, boxes and panel boards
3. Collision / Clash Detections
4. BIM file conversion



PLUMBING

1. Creation of 3D Plumbing layout
2. Water supply distribution plans/layout model
3. Storm drain & sewer drain plans/layout model
4. Collision / Clash Detection
6. BIM file conversion



MECHANICAL

1. Creation of 3D Mechanical models
2. Mechanical Ducts/Lift and other related elements
3. Collision / Clash Detections
4. BIM file conversions

Model Options:

STEP 1 : Choose Model Requirement

1 Conceptual Model

- A model built to represent the information on a **basic level**.
- Inclusions are as follows:
 1. Structure
 2. Walls
 3. Floor
 4. Windows
 5. Doors



Rate: P90.00 / sqm

2 Construction Model

- This includes all aspects in the Conceptual Model but are more extensive to include the following:
 1. Ceiling
 2. Wall Finishes
 3. Floor Finishes
 4. Cabinets
 5. Plumbing Fixtures
 6. Light Fixtures



Rate: P130.00 / sqm

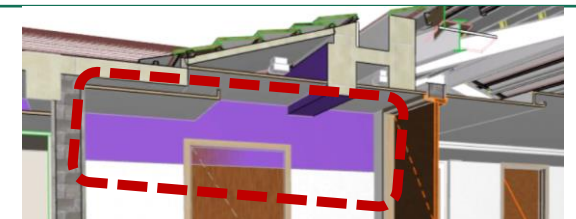


BIMx (iOS) BIMx (Google)

Both options come with 2 files both accessible via the BIMX App (free download):

- Structural model
- Structural integrated with Architectural model

Plus, clash detection information in a PDF file with images.



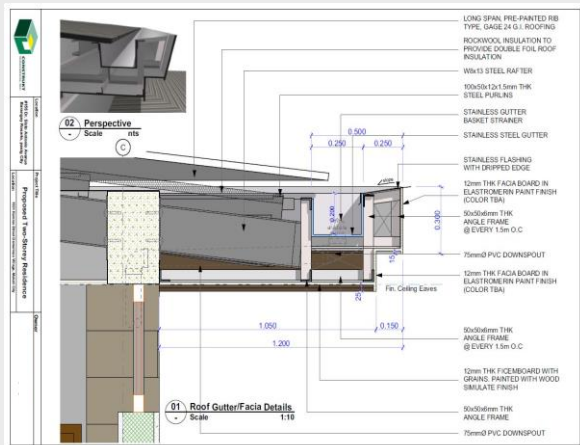
Additional Options to Build:

STEP 2 : Choose among the add-ons available to your preferred model

1 Model Details

- Includes the following:

SHOP DRAWINGS
via PDF file



SPOT DETAIL

Ability to zoom in and blow up image details



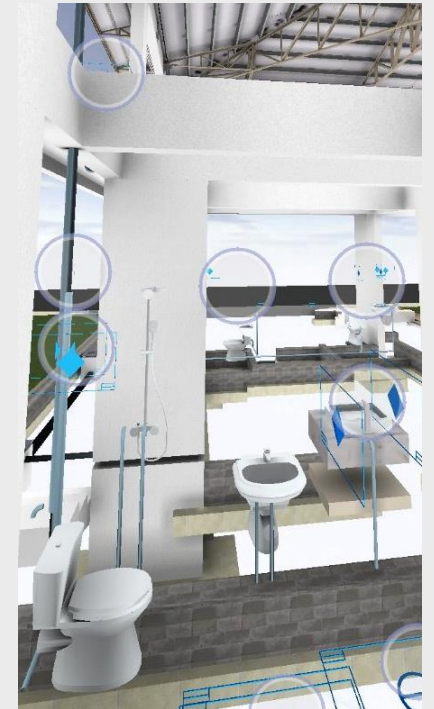
Rate: P500.00 / hour

(Total hours projected will be provided through a formal quotation)

2 Full Detailed Features

- This includes the following details in development:

- Mechanical
- Electrical
- Plumbing Ducting
- Conduits
- Pipes
- Panel Boards
- Pumps
- Outlets and Switches



Rate: P500.00 / hour

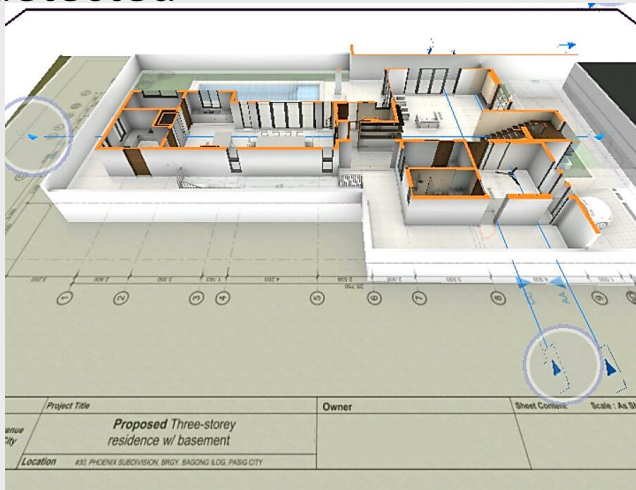
(Total hours projected will be provided through a formal quotation)

Additional Options to Build:

STEP 2 : Choose among the add-ons available to your preferred model

3 Revisions

- Changes from the provided final plan
- Includes corrections on noted clashes detected



Rate: P500.00 / hour

(Total hours projected will be provided through a formal quotation)

4 Outdoor Services

- Includes specific areas outside the home such as garage, outdoor pool and deck area



Rate: P30.00 / sqm

Output Provided:

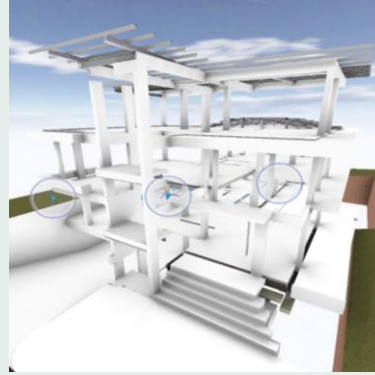
CONCEPTUAL Model

CONSTRUCTION Model



1. Two (2) files for BIMx upload:

- **Structural** model



- Structural integrated with **Architectural** model



2. PDF File with **clash detection**

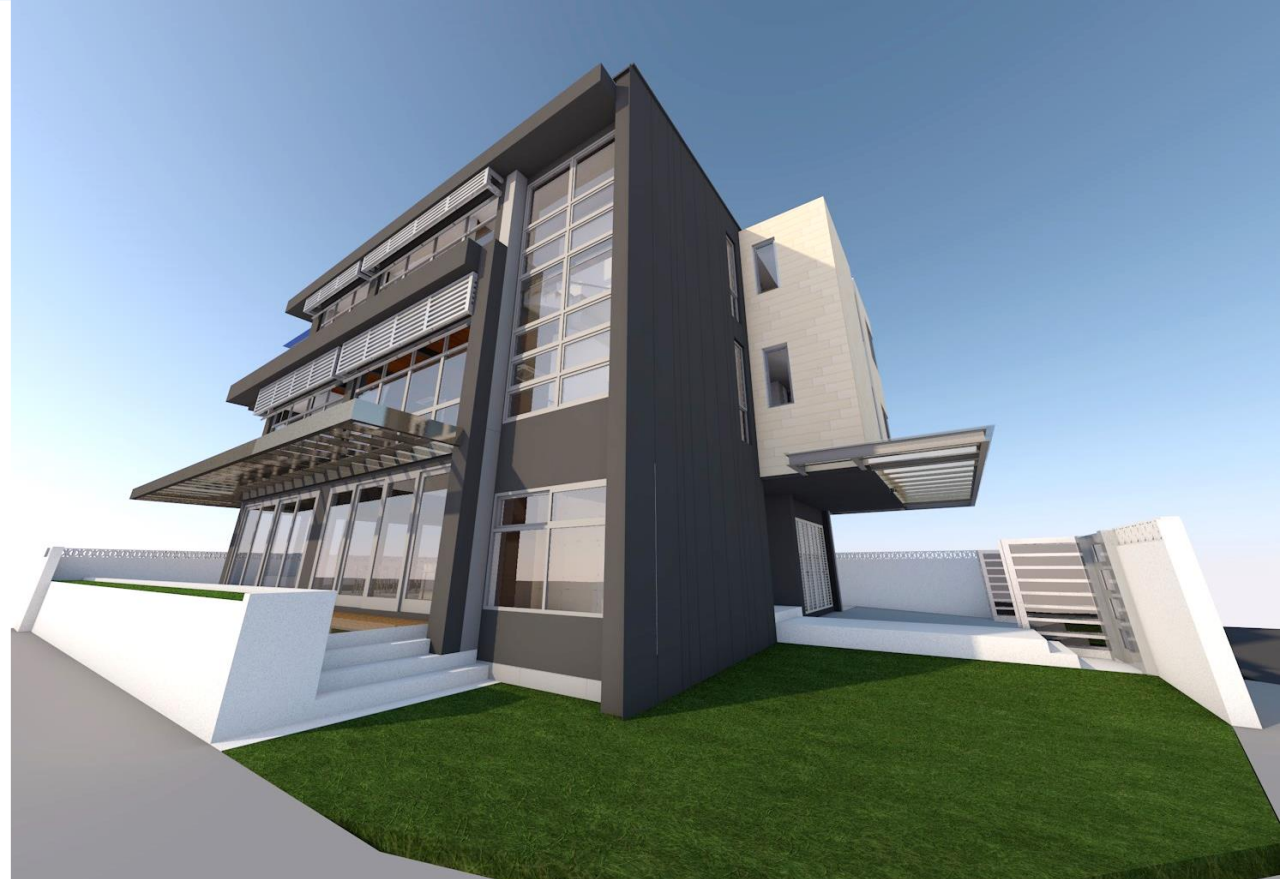


Address: # 155 De Soto Antonio Ave., Paig, 1609 | Telefax: 02 949 4509

No.	Description	Location
1	Protuding RG1 & RCG1 to ceiling cove.	MASTER'S BEDROOM
2	Protuding RG2 to ceiling cove	JUNIOR MASTER'S WIC
3	Protuding RG2 to ceiling cove	BEDROOM 1 WIC
4	Proposed inverted RB1 to avoid protruding roofbeam to ceiling - (RFA)	ANTE ROOM



**Comparison
of Output
Development
Provided Per
Model**



COMPLETED PROJECTS

BUILDING INFORMATION MODEL



Click the image to see an actual walk through video using our BIM service





Building Information Model



Actual Completed Project



Building Information Model



Actual Completed Project



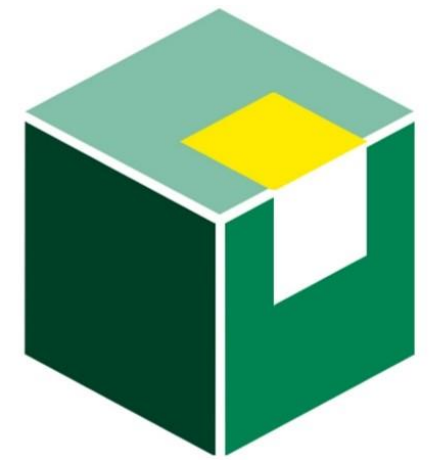
Building Information Model



Actual Completed Project







CONSTRUKT
Innovations, Inc.

Thank you!

LET'S DISCUSS